

LOCHIN 40 SPORTS FISHERMAN with FLY-DECK MCA Cat.2**Overview:**

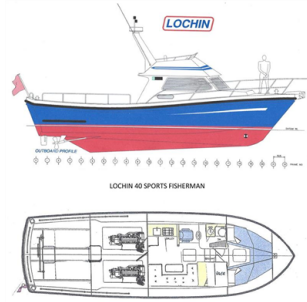
'RMS 3' currently operates as a crew transfer vessel in Gibraltar under MCA Cat. 2 certification (12 + 2) with load line exemption (825kgs). Originally built as a charter fishing vessel, subsequently used for diving charter her functionality as a working vessel is well and truly proven. Her power units are original but are reportedly fully operational being regularly serviced and maintained as a commercial undertaking. The robustness of construction is evidenced by features such as the double heavy section 'D' fendering which is doubled at gunwale height together with typical Lochin construction characteristics. The larger flush deck area is ideally suited to a working environment and the fly-deck provides an excellent vantage point in confined areas. This vessel has updated Raymarine electronics (2018), new propellers in 2020 and is Part 1 British registered. A rare and desirable vessel at a more than sensible price. Viewing strictly by arrangement through ourselves.....

Principle Information:

Make:	LOCHIN 40	Vessel Reference:	LOCH 1418
Model:	SPORTS FISHERMAN with FLY-DECK MCA Cat.2	Number of Engines:	SPORTS FISHERMAN with FLY-DECK MCA Cat.2
LOA:	12.24m (40' 2")	HP (each):	350
LWL:	10.85m (35' 7")	Fuel:	Diesel
Beam:	3.83m (12' 7")	Hull Material:	GRP
Draft:	1.58m (5' 2")	Displacement:	12000Kg (12Tonnes)
Build	1995	Hull Type:	Semi-Displacement
Year:			

Price : GBP 99,000.00 Plus VAT

Accommodation Layout:



Accommodation Overview:

Berths:	6	Galley Includes	
Cabins:	2	- Cooker:	N Hob/Grill:N
Heads:	Y	- Microwave:	N
Shower:	N	- Refrigerator:	N
Pressurised Hot/Cold Water:	N Heated By:	- Central Heating:	N
		- Air Conditioning:	N

Accommodation Description:

From Fwd: FORECABIN with four 'tiered' bunks and storage below the lower seats, access to the anchor locker forward and a deck ventilation/escape hatch above in the deck head. HEADS compartment to port with ITT Jabsco electric sea toilet, wash basin (H&C) and additional storage/ hanging space to starboard. The central companionway leads to the WHEELHOUSE: helm console to port with engine instrumentation and electronics installed in close proximity, helm suspension seat affording excellent panoramic visibility. The GALLEY has been removed in favour of additional seating / storage but this could be reinstated if required. To starboard a large 'L' shaped settee with pedestal table converts to a double berth if required by lowering the table. Ample seating for 6 + crew / passengers. A central door leads to a flush COCKPIT DECK: Large gas strut supported engine hatches for excellent service access and an additional central Bowmar type deck hatch for below decks storage, etc.. A transom stern door opening offers easy access for divers or for stern-to mooring. A stn/stl ladder leads to the FLY-DECK: central helm unit installed with essential instrumentation and controls with helm seat. A GRP gantry mast houses antenna and electronic installations. The complete package for offshore working.

Mechanical:

Engine Make & Model:	CATERPILLER 3116	Battery system:	24V
Gearbox Make & Model:	TWIN DISC MG5061A - Ratio: 2:1	Power Generators:	
Drive Configuration:	Shaft Drive	- Genset (Kva):	0
Engine Year:	1995	- Genset Model:	
Engine Hours:	8500	- Inverter:	N
Last Serviced:	00/00/0000	Shore Power:	N
		Battery Charger:	N
Engine Make & Model:	CATERPILLER 3116		

CATERPILLAR 3116TA 6 Cyl. (6.6litre) turbo charged diesel engines rated at 350hp each driving through TWIN DISC MG5061A adjusted angle gearboxes (Ratio 2:1). Propellers replaced 2020.

Engine servicing: reportedly after 250hrs running

ENGINE HOURS: Approx. 8,500 hrs

FUEL: 2 x centerline fuel tanks - each approx. 100 gals (450 litres)

WATER: Approx. 100 litres

HOLDING TANK: capacity to be confirmed

Inventory

Navigation

Raymarine Quantum Q24C Axion 9

Chart Plotter / GPS

Raymarine DST 800 Triducer

2 x Raymarine 52 DSC VHF Radios

Steering Compass

Azumuth Compass

Electrical

24 Volt system served by 4 No. HD batteries for engine starting and domestics.

230v Shore Power with Invertor for battery charging

Safety

Most Coding compliant safety equipment (excluding life rafts)

14 x Foam Life Jackets

2 x Life Buoys

4 x Hand Extinguishers + 2 x Automatics

5 x Auto Electric Bilge Pumps

Firdell Blipper Radar Reflector

Deck

Navigation lights

Deck Illumination Ligthting

2 x Anchors + Warps and Chain

Doubled Heavy 'D' section Fendering

Stainless Steel Rails (inboard (fwd)

Cockpit Rails

Central Stern Door

Searchlight

Twin Wipers

Stn Stl. Fly-deck Ladder (with wooden treads)

Fly-deck Cover

Central Bowmar type Deck Hatch

Deck Scupper Ports (to Coding Requirements)

Disclaimer: The Company offers the specification of this vessel in 'good faith' but cannot guarantee or warrant the accuracy of this information nor warrant the condition of the vessel. A buyer should instruct a surveyor or agent to investigate such details as the buyer desires validated. This vessel is offered subject to prior sale, price change, or withdrawal without notice.

Lochin Marine International Ltd. Registered in England No: 1972300.



Heavy Section Fendering



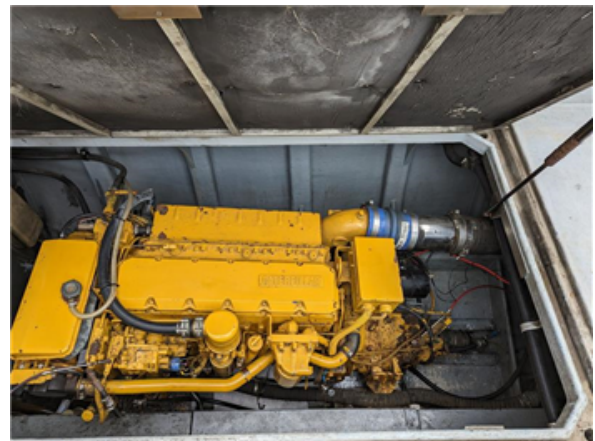
Bow View



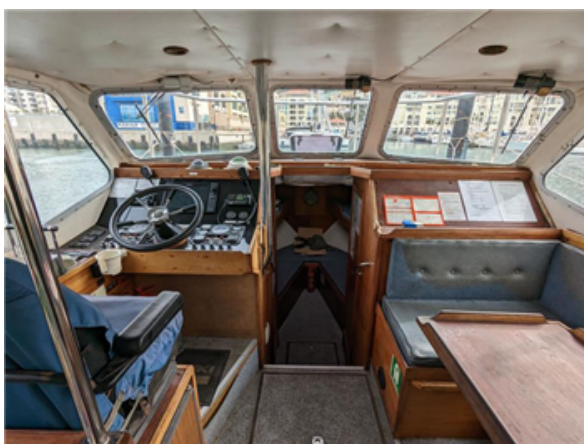
Stern Door and Cockpit



Engine Access



Service Access



Wheelhouse Layout



Wheelhouse Dinette / Seating



Forward Accommodation



Stern View



Heads Compartment



Seat instead of Galley

